

Open+ Release notes

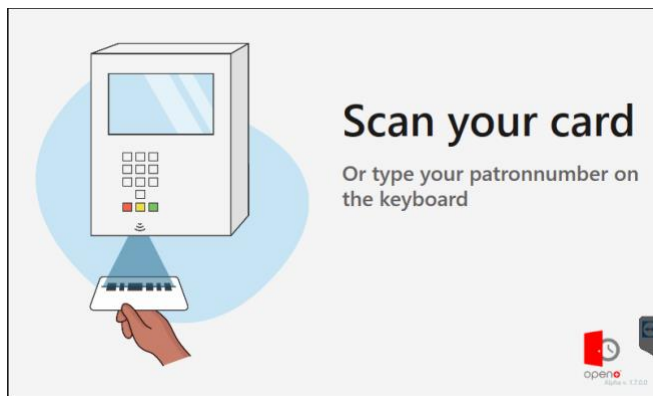
Version 1.7.0 – new features, improvements and fixes.
Dec 2019

open+ 1.7.0: Release notes

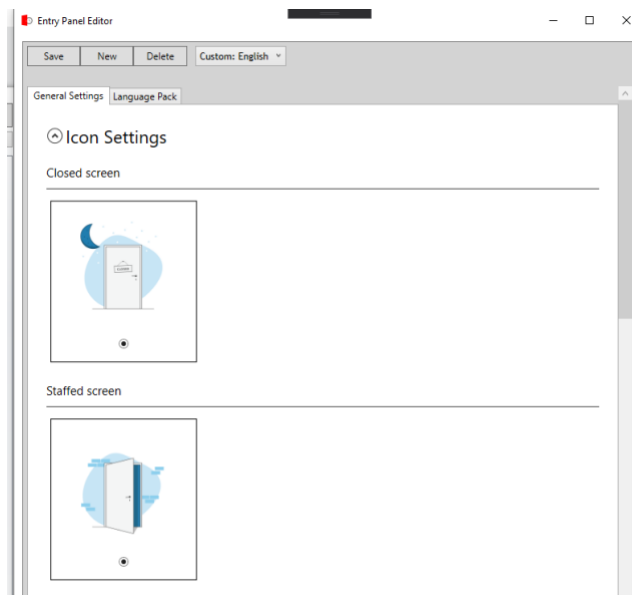
Welcome to the Dec 2019 release of open+ 1.7.0.

Highlights

- | Entry Panel User Interface
 - o Beta: New skin with icons and animations on the entry panel
 - o Classic skin remains available and default

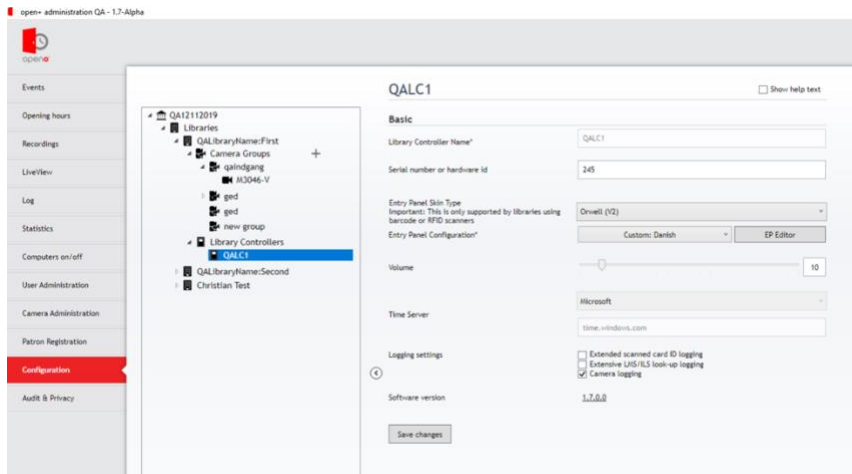


- | Entry Panel Editor
 - o Library staff can now change entry panel (EP) texts and skins themselves in the new EP Editor



- | Configuration Tool

- Possible for library staff to change basic settings themselves



Calendar update

- Easier method for changing opening hours for entire day(s) with the new Quick Edit feature

Improvements

Gate Integration and Recordings side tab (OL-770)

- Map a camera to a gate so it is possible to play recordings from that camera just by clicking on the gate alarm event.
- The open+ software will play recordings from x seconds before an event, e.g. when playing the gate alarm event. X is a setting that can be adjusted to fit the local network and configurations. Default setting: Jump 5 seconds back or jump to start of recording before playback.
- It is now possible to filter gate alarms by book material number in the recordings side tab (OL-770-2).
- 'Client Time' in Recordings event list renamed to 'Time' (OL-931).
- Minor UI improvements in the recording side tab.

Removal of the open+ administration AXIS prerequisites (OL-968)

The open+ software now utilises FFMPEG instead of the previous AXIS software. Therefore, it is no longer necessary to install the AXIS prerequisites when installing open+ administration.

Edit profile / change password

Improved the feedback if typing incorrect current password.

LMS / ILS

- Support for Aztec NCIP added
- Cicero (DK) support extended (OL-707)
 - If a library is only using CPR numbers as patron numbers (no lånerkort) it is now possible to validate the patron number immediately when the card is scanned, before entering the PIN.
 - Cicero can now be setup to only retrieve data on patrons if that patron exists – but all patrons are always allowed access. So, the procedure is:
 1. Try to find the patron number in the LMS
 2. If the patron is found, log patron data for statistical purposes
 3. Always allow the patron access.

Email Notifications

- FTP or Network Share online / offline email can now be sent (OL-890)
- The Daily Status Report now only shows library controllers as offline if the open+ server has not heard from a controller in the last 20 minutes. This reduces false positives because where a library controller is incorrectly marked as offline.

Overhead People Counter

Changed Overhead People Counter pull frequency to 15 seconds, so data is saved more frequently. For future development this enables statistics at 1-minute intervals (OL-943).

Language Support

- Dutch is now supported by open+ administration (OL-882)

Fixes

open+ administration

- Optimized the login procedure (OL-533-2)
 - o Also added spinner on first login so it is visible that data is being loaded (OL-533-1)
- Fixed issue: If user only have recordings side tab enabled, an error occurred on login (ol-875-6)
- Log sidetab – new note texts are now reflected in the user interface immediately after pressing save, without having to reload the logs (ol-875-2)
- Fixed issue: Cannot download recordings in some cases (ol-875-5)
- All branches drop-down item was sometimes not shown when changing side tab in open+ administration, e.g. statistics (ol-875-7)
- Self-service starting sound is now visible in open+ admin (templates / staff switch) (ol-875-21)
- The Event side tab is now updated even if no logs are available for the selected log filters

open+ library controller

- Patron Number Format Validation settings of must/must not - start/end with characters now works as expected when using multiple values (only one of them needs to be correct) (ol-875-1)
- Fixed an issue where PCs turned on at midnight if no turn-off PC event was present in the closed template (OL-887)
 - o Removed the function that events are run again at midnight

Staff switch

- Staff switch was slow when enabling / disabling multiple times (ol-875-12)
- Sounds are no longer played on library controller restart if staff switch is enabled:
 - o Log when we last booted. If we recently booted, do not play sound. If previous input state is not same as current, play sound anyways (OL-881-1)
- Staffed state event could not be added to a staff switch (ol-875-22)