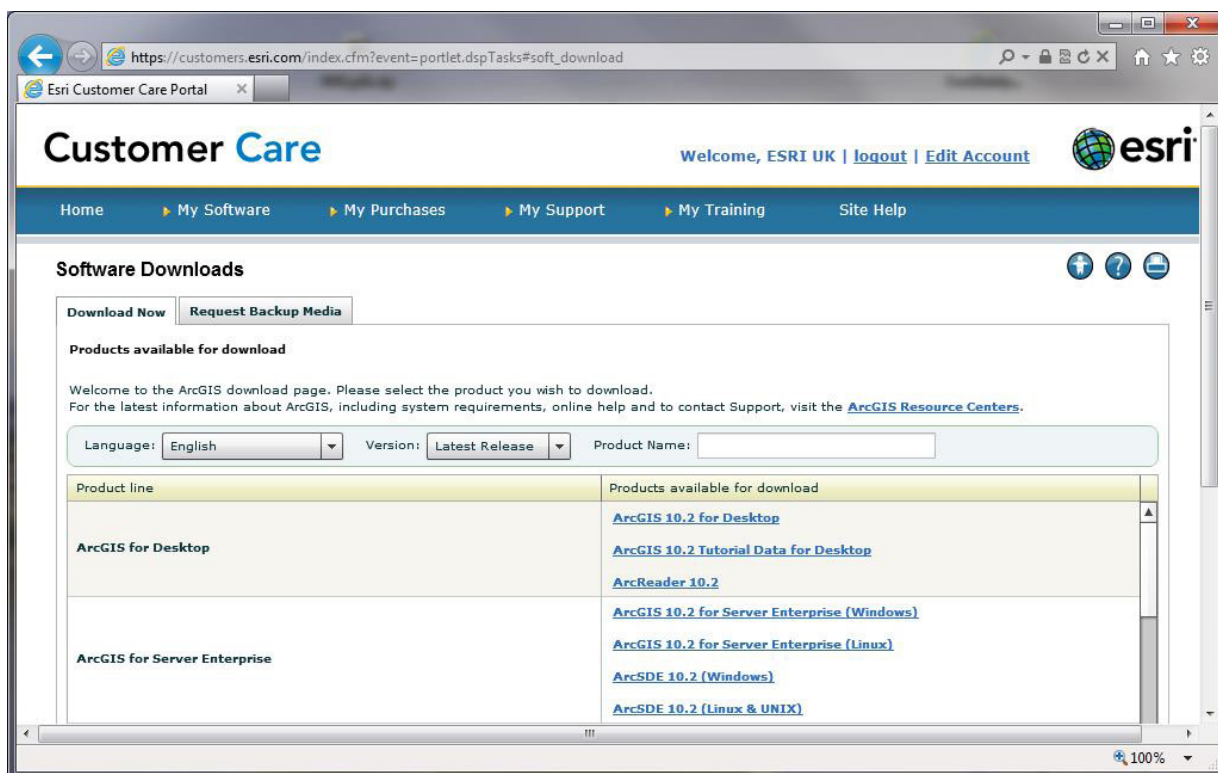


Welcome to ArcGIS

How to Install ArcGIS 10.2 Tutorial Data for Desktop

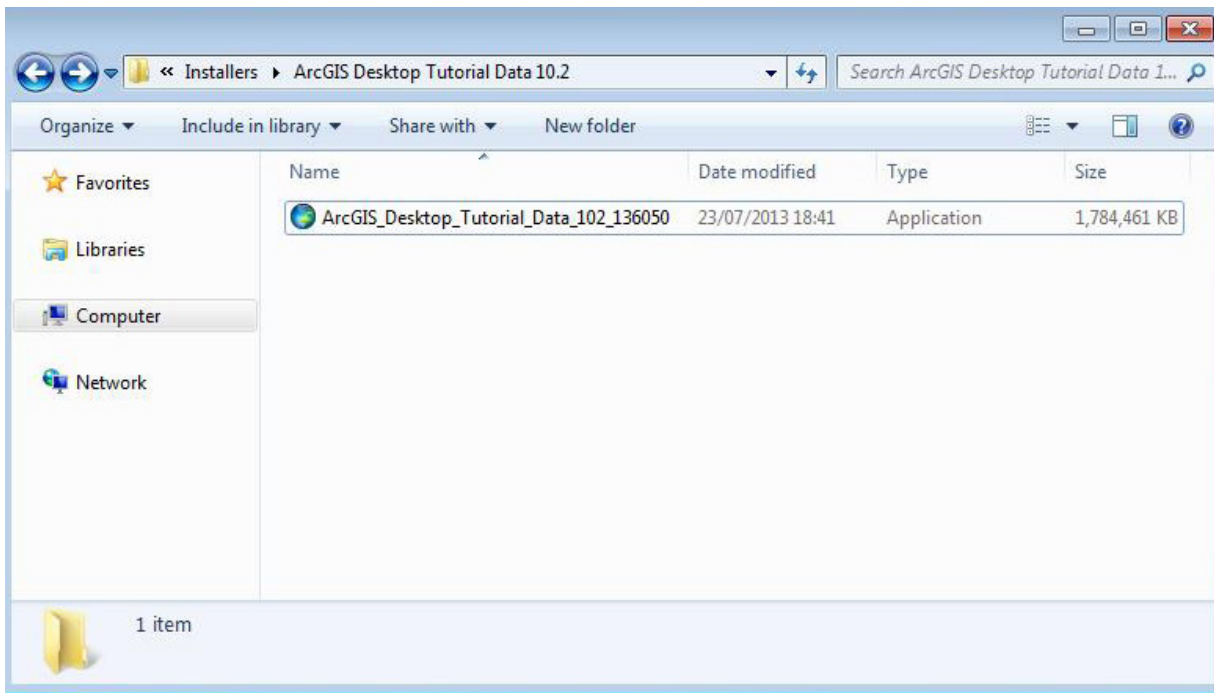


This document shows you how to download the tutorial data and how to access the documentation for it. You can download the Tutorial setup ISO image from the Customer Care Portal. Please see the step on **Downloading your Software** for details on how to do this.

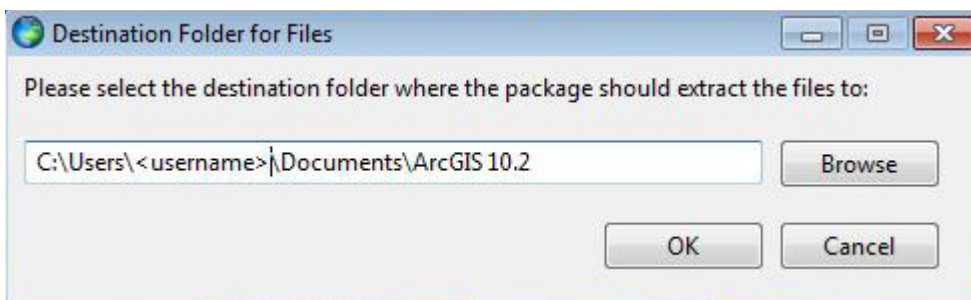


The screenshot below shows the tutorial data folder, once extracted from the ISO file into a folder called ArcGIS Desktop Tutorial Data 10.2.

1. Run the **ArcGIS_Desktop_Tutorial_Data_102_136050.exe** file if it does not automatically launch.

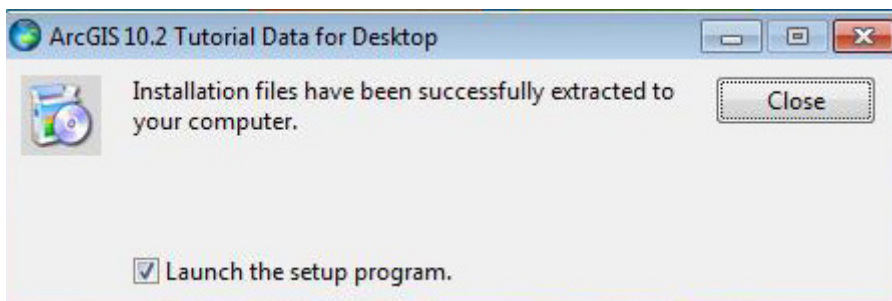


The Setup screen will appear.

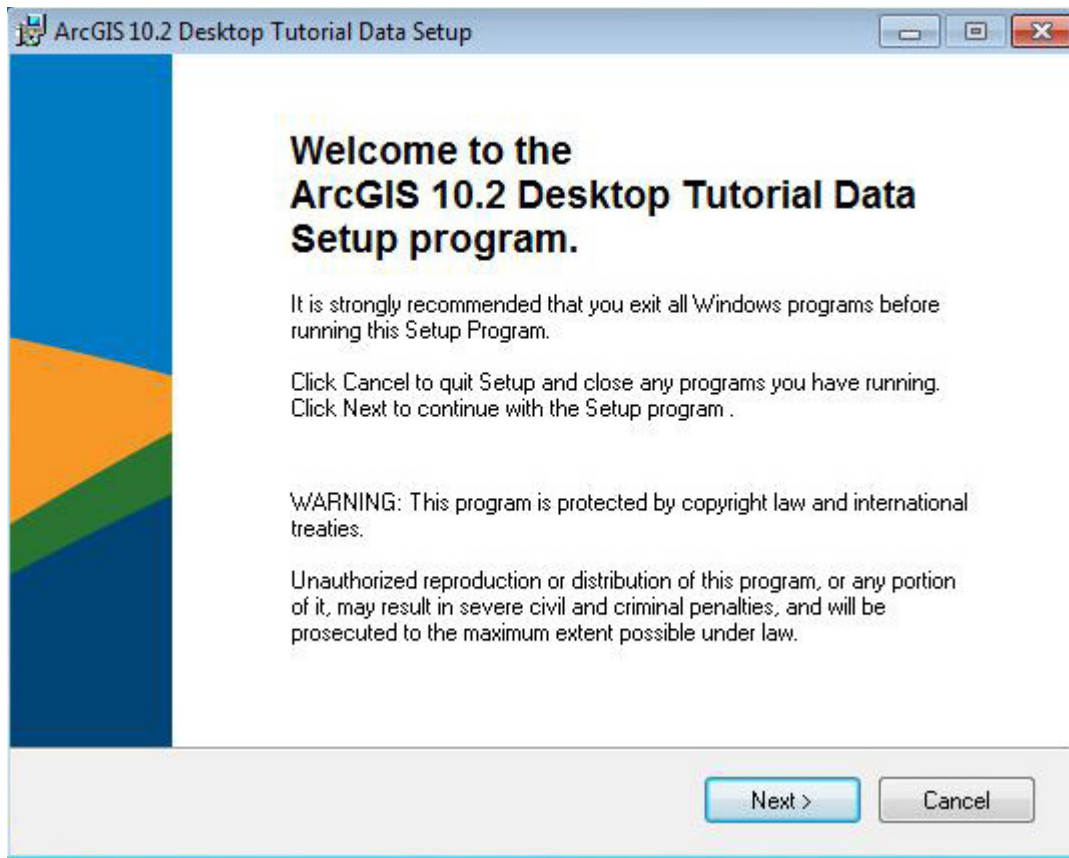


Click **OK**.

Once extracted, the following window will appear:



Click **Close** to launch the installation wizard.



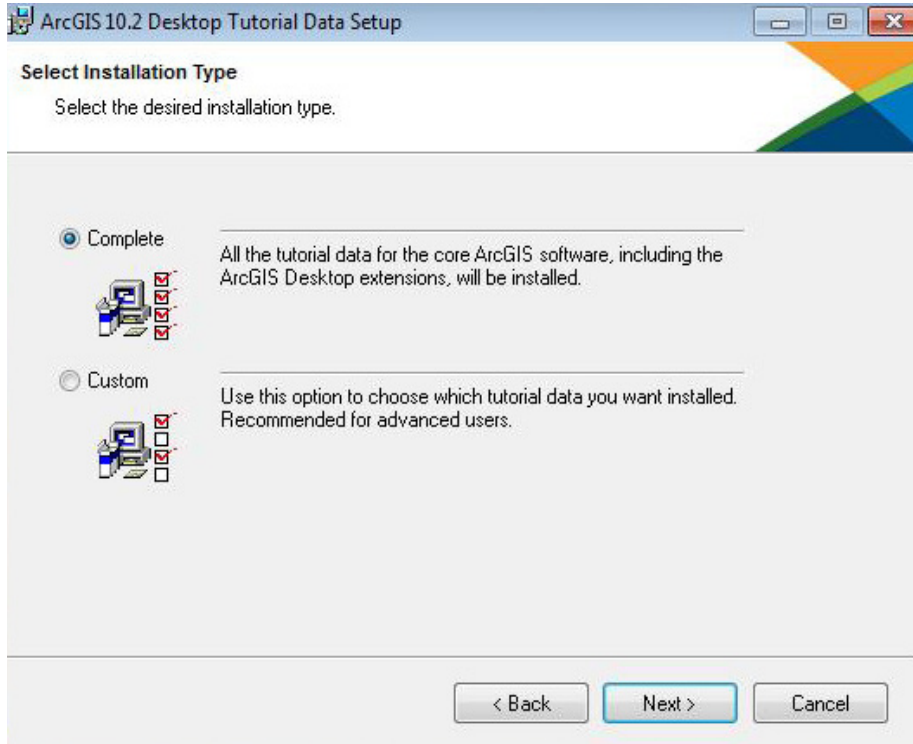
Click **Next**.

2. Tick the radio button to accept the licence agreement.

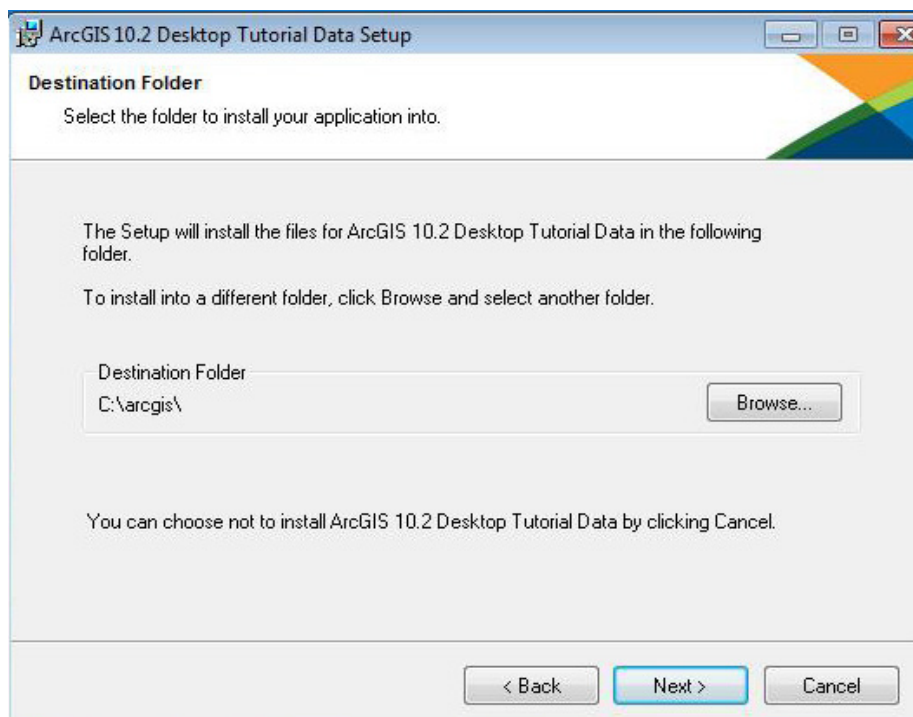


Click **Next**.

3. Choose the Complete install to install all the tutorial data. Alternatively, if you wish to select fewer tutorials, choose Custom. The two screens are shown below.

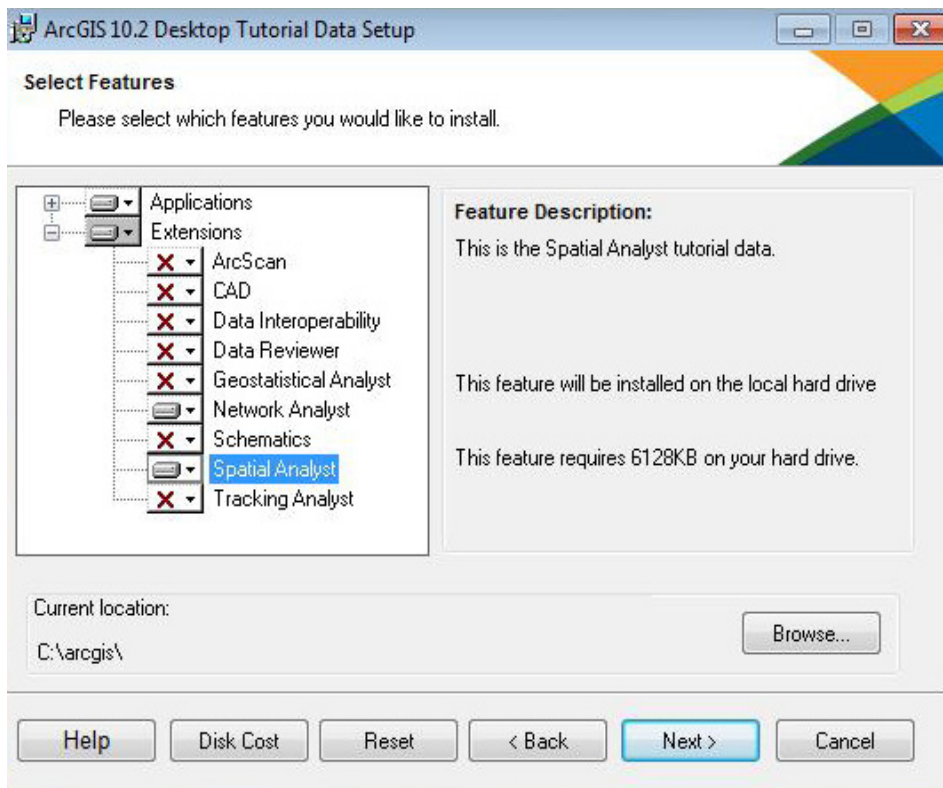


Complete

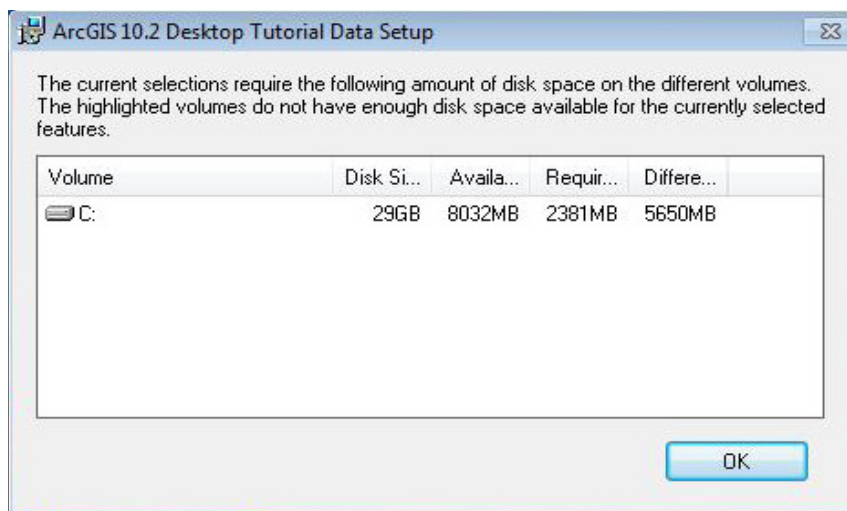


Custom

Here, the Network and Spatial Analyst extension tutorials have been selected.



You can find out how much disk space the selected tutorials will take up by clicking on the **Disk Cost** button.



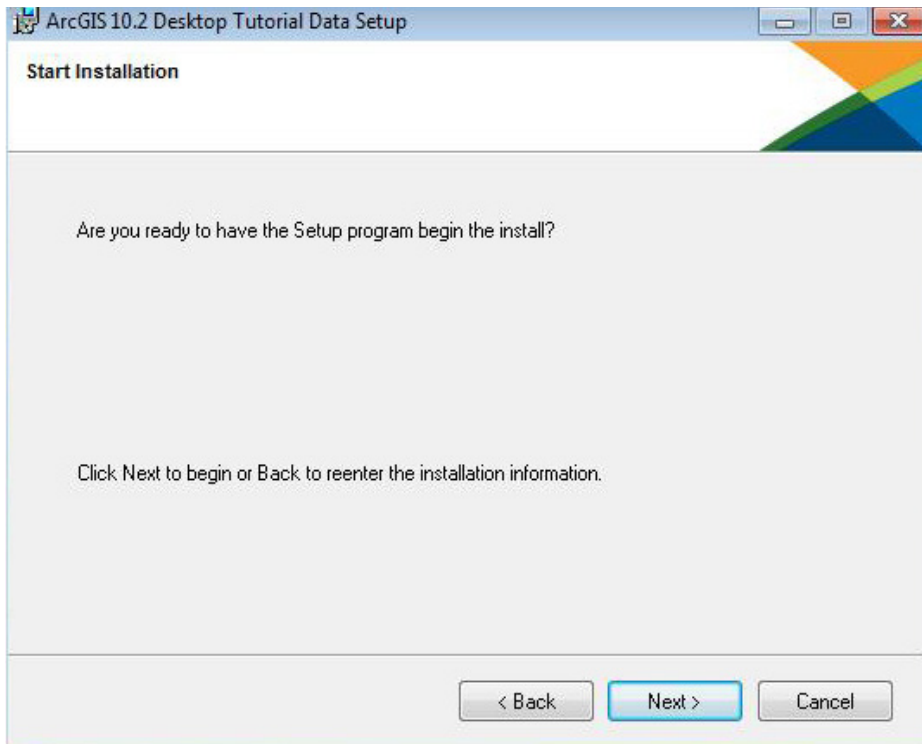
Click **OK** to dismiss the **Disk Cost** window.

Click **Next**.

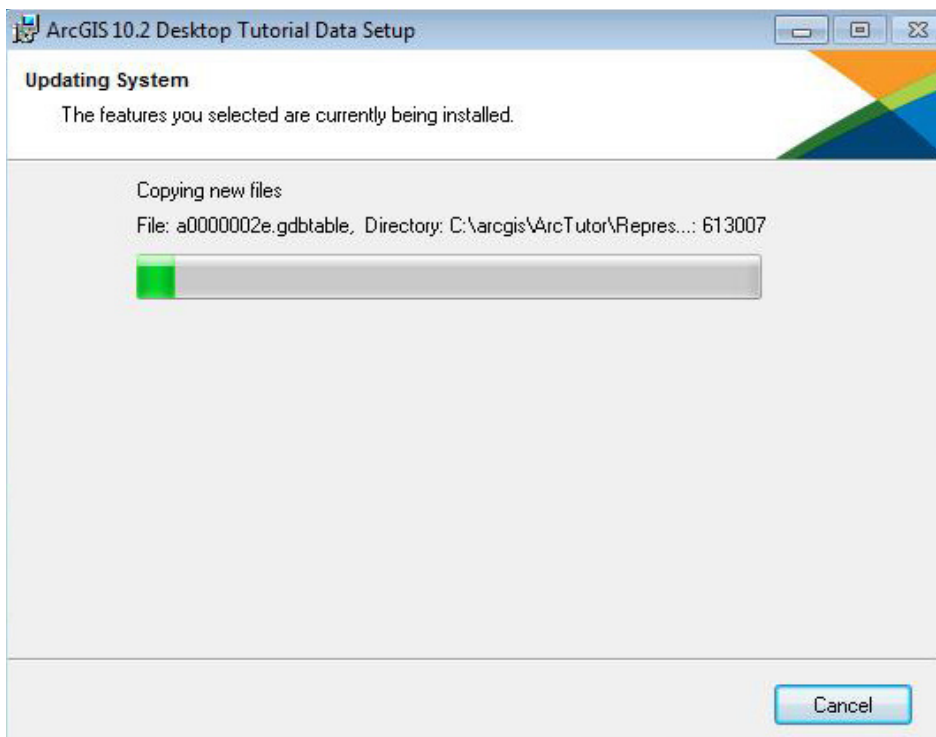
4. The default install folder is **c:\arcgis** but you can change that to a preferred location if necessary.

Click **Next**

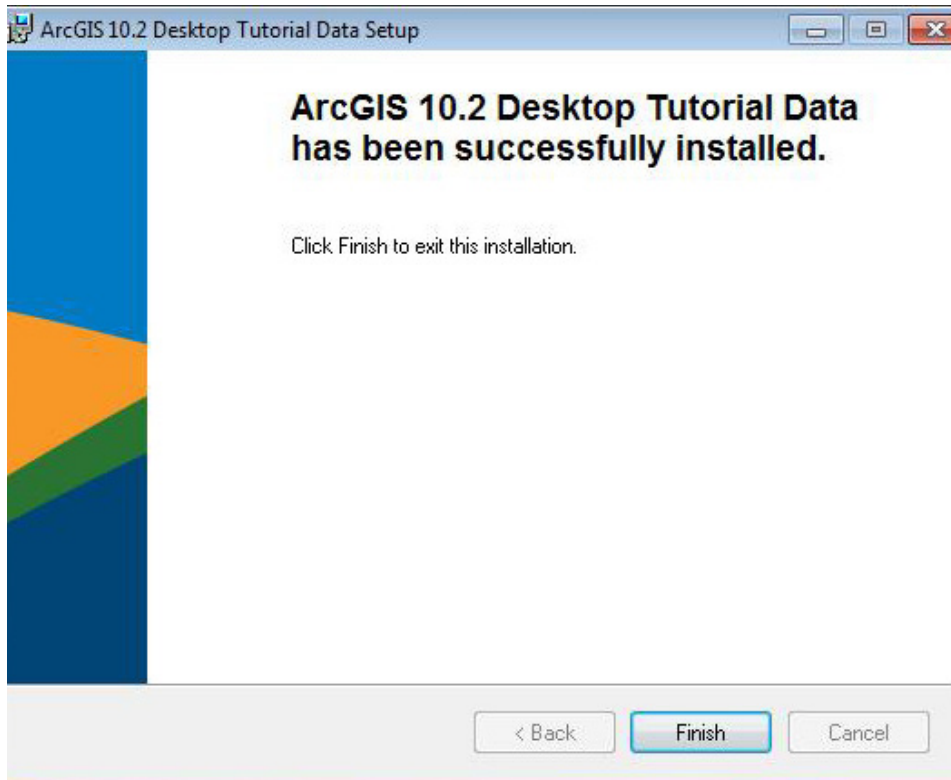
5. Click **Next** again to confirm you are ready to start the install.



The tutorials you selected, or the complete set, will be installed. This will take several minutes for a complete install.

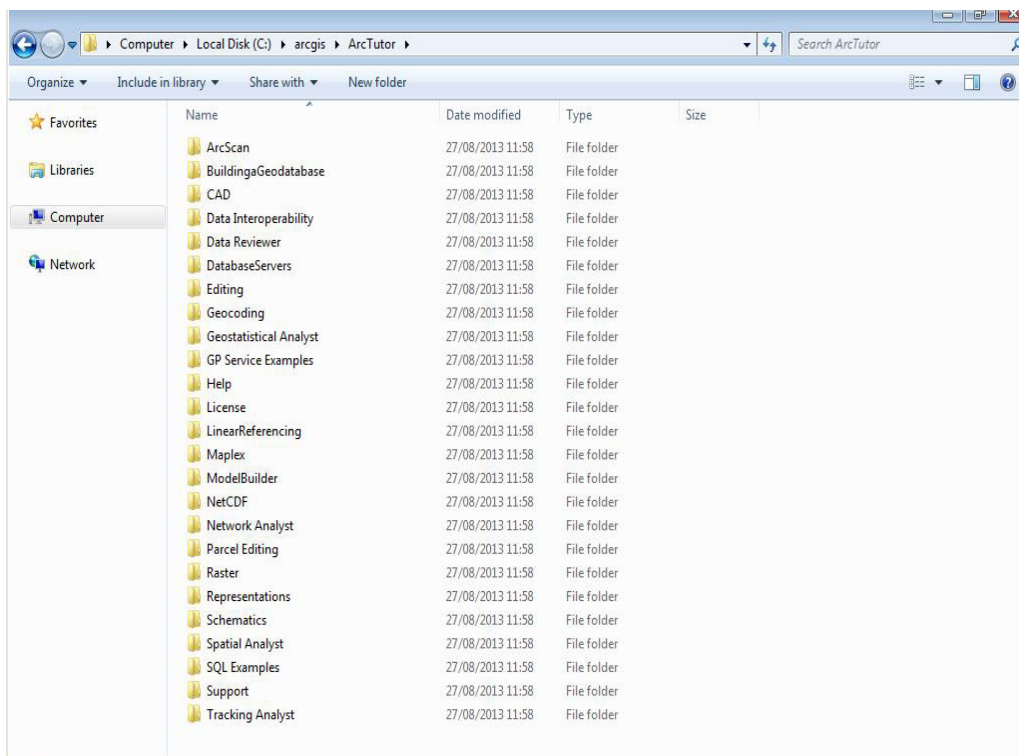


6. The confirmation screen will display telling you that the tutorial data has been successfully installed.



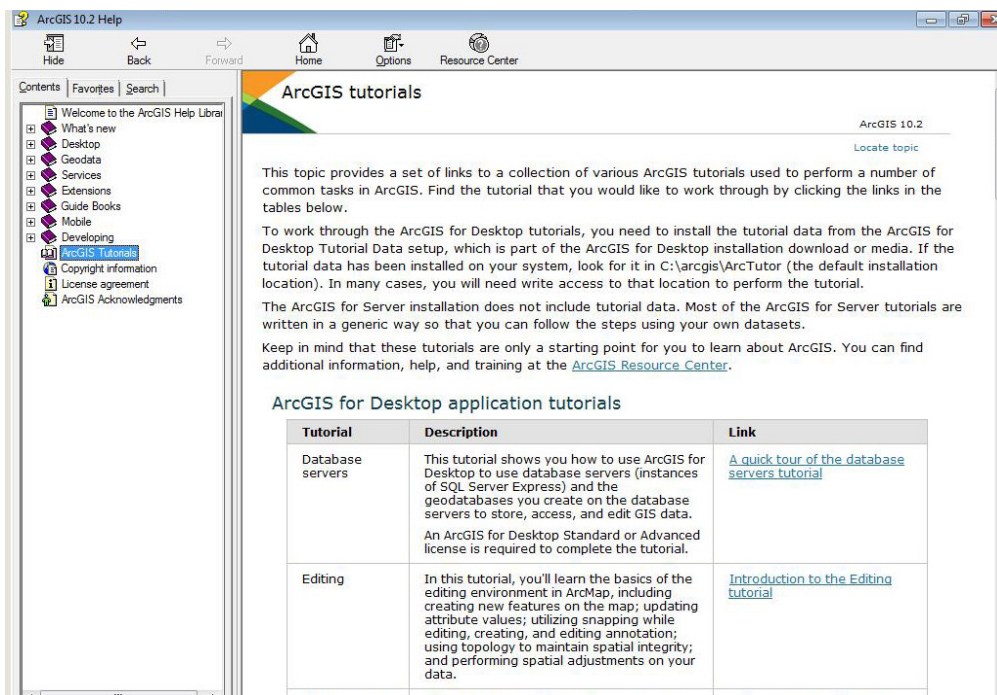
Click **Finish**

7. The new ArcTutor folder in c:\arcgis contains all the tutorials you selected. In the screenshot below a complete install has installed all available tutorials.



The documentation for these tutorials can be found in ArcGIS for Desktop help. This can be accessed from within ArcMap, ArcCatalog or online at the resource centre: <http://resources.arcgis.com/en/help/main/10.2/index.html> (see ArcGIS tutorials on the left-hand side).

This screenshot shows the Tutorial home page in the help opened from within ArcMap.



Click on the link for the tutorial you are interested in to see a description. The exercises are available in the Contents tree on the left. Here, for example, is the tutorial for Editing.

