

Welcome to ArcGIS

How to Install ArcGIS for Desktop 10.2 - Concurrent Use



This guide will help you install ArcGIS for Desktop (Basic, Standard, Advanced). First, let's review the setup requirements that you need to consider before installing Desktop 10.2.

System Requirements

The Desktop 10.2 system requirements page includes information such as the operating systems and service pack levels of those that we support for the products you're installing.

<http://resources.arcgis.com/en/help/system-requirements/10.2>

Software Requirements

- .NET Framework 3.5 SP1 must be installed prior to installing ArcGIS for Desktop. If you have other applications that require a different version of the .NET framework that's fine because you can have multiple versions of the framework installed at the same time on the same computer.
- Internet Explorer requirement: ArcGIS for Desktop requires a minimum installation of Microsoft Internet Explorer Version 7.0 or 8.0. Please install it prior to installing ArcGIS for Desktop.

Uninstall Conflicting Software

Before you install your new software, you should do some preparation work. This includes removing any third-party extensions, stand-alone extensions, add-ins, or third-party applications that you might have installed.

You also need to remove any older versions of ArcGIS products. You can use the ArcGIS uninstall utility to identify, and also to remove, those conflicting ArcGIS products for you. (For ArcGIS for Desktop 10.1 please see below.) 102UninstallUtility.exe is available, along with a **102UninstallUtilityGuide.html** help file, on the product media (DVD) and in the ISO image. If you choose, you can run this utility before launching Esri.exe. Alternatively, you can run it from the splash screen that Esri.exe opens (see the screenshots in Step 1 below).

Note: ArcGIS for Desktop 10.2 can be installed on top of ArcGIS for Desktop 10.1. It saves you the time you would spend uninstalling it.

ESRI.exe Setup File

There is one file called ESRI.exe which launches a splash screen from where you can install the components of ArcGIS for Desktop. After installation, you configure your ArcGIS for Desktop software with information such as the product type (Basic, Standard or Advanced) and whether it is single use or concurrent use.

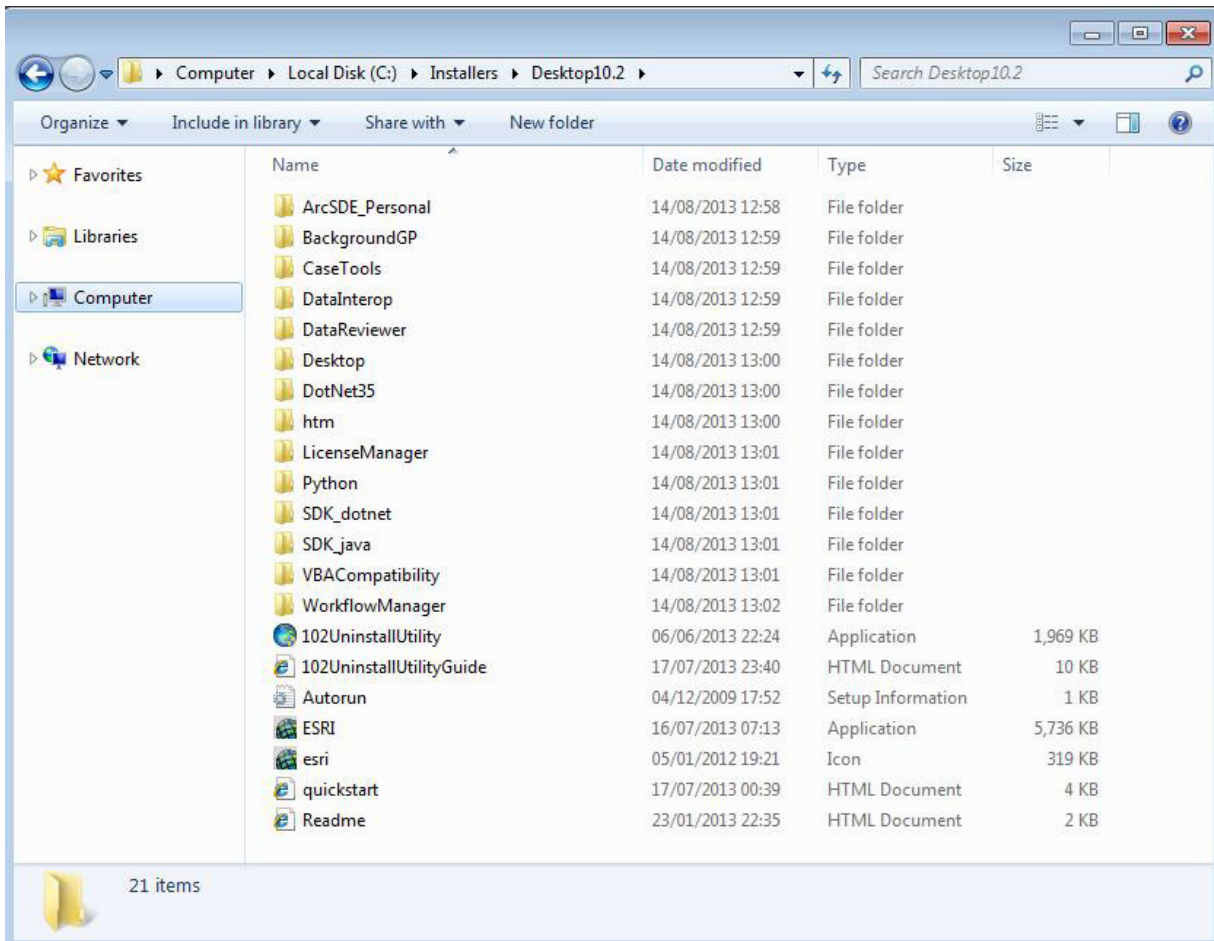
For Single use, you authorise the software on the machine it's installed on and for Concurrent use, you install the Licence Manager. After installation, you can change the selections at any time by using the ArcGIS Administrator and you don't have to uninstall or run any other setup on your machine.

Installing ArcGIS for Desktop

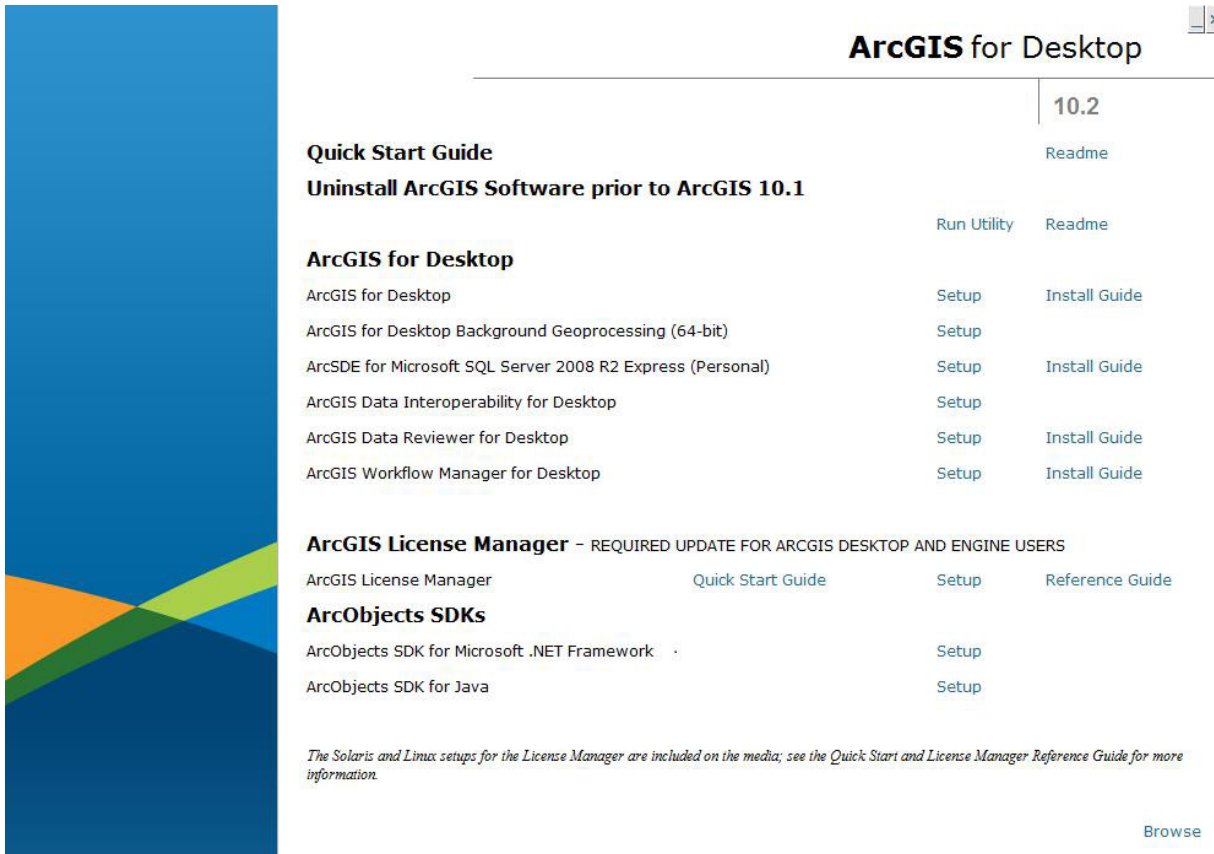
Please follow the steps below to complete a full installation of ArcGIS for Desktop:

1. If the setup menu does not automatically display, navigate to the ArcGIS 10.2 for Desktop media or the folder you extracted the ISO image to and run **ESRI.exe**.

Here is a screenshot of the Desktop install folder contents.



This will open the ArcGIS for Desktop setup window where you can view the Quick Start Guides and launch the setup for the various products.



ArcGIS for Desktop 10.2

Quick Start Guide [Readme](#)

Uninstall ArcGIS Software prior to ArcGIS 10.1 [Run Utility](#) [Readme](#)

ArcGIS for Desktop

ArcGIS for Desktop	Setup	Install Guide
ArcGIS for Desktop Background Geoprocessing (64-bit)	Setup	
ArcSDE for Microsoft SQL Server 2008 R2 Express (Personal)	Setup	Install Guide
ArcGIS Data Interoperability for Desktop	Setup	
ArcGIS Data Reviewer for Desktop	Setup	Install Guide
ArcGIS Workflow Manager for Desktop	Setup	Install Guide

ArcGIS License Manager – REQUIRED UPDATE FOR ARCGIS DESKTOP AND ENGINE USERS

ArcGIS License Manager	Quick Start Guide	Setup	Reference Guide
------------------------	-----------------------------------	-----------------------	---------------------------------

ArcObjects SDKs

ArcObjects SDK for Microsoft .NET Framework	Setup
ArcObjects SDK for Java	Setup

The Solaris and Linux setups for the License Manager are included on the media; see the Quick Start and License Manager Reference Guide for more information.

[Browse](#)

The ArcGIS for Desktop setup includes a number of optional extensions that can be authorised during the ArcGIS for Desktop authorisation process. These include the popular extensions like Network, Spatial and 3D Analyst.

In addition, you can also use the separate setups to install a personal version of ArcSDE for Microsoft SQL Server 2008 R2 Express and the following Desktop extensions. These extensions for Desktop will require additional licences.

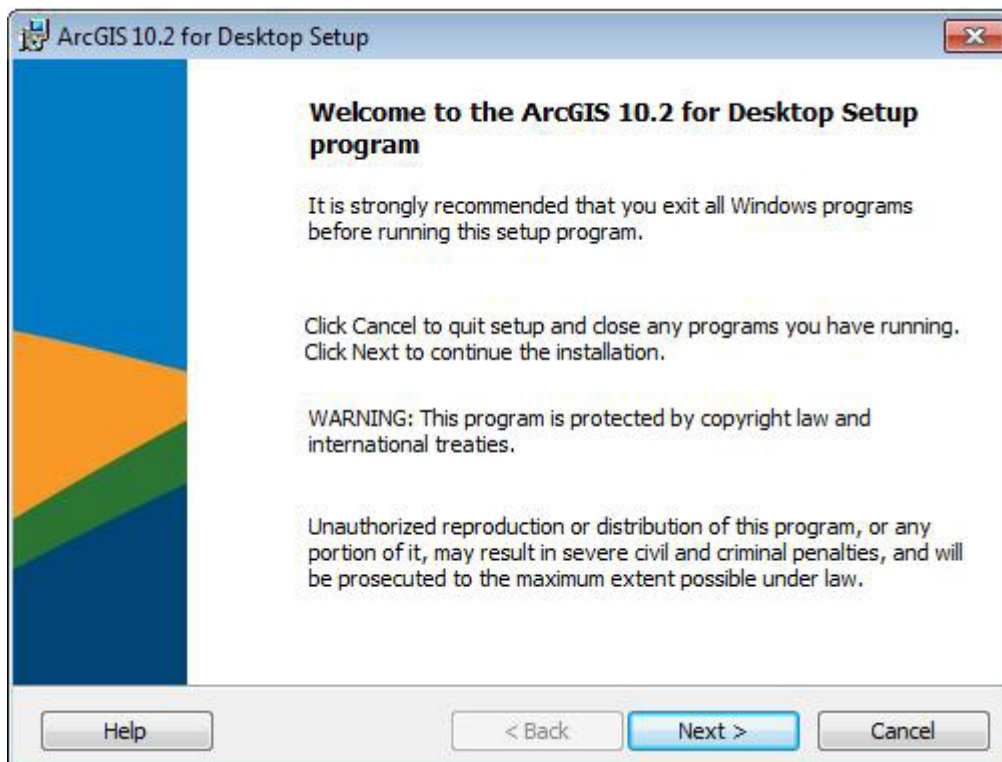
- a. ArcGIS Data Interoperability for Desktop
- b. ArcGIS Data Reviewer for Desktop
- c. ArcGIS Workflow Manager for Desktop

2. Click on the ArcGIS for Desktop **Setup**

ArcGIS for Desktop

ArcGIS for Desktop

[Setup](#)



Click **Next**

3. Click the radio button next to **I accept the license agreement**

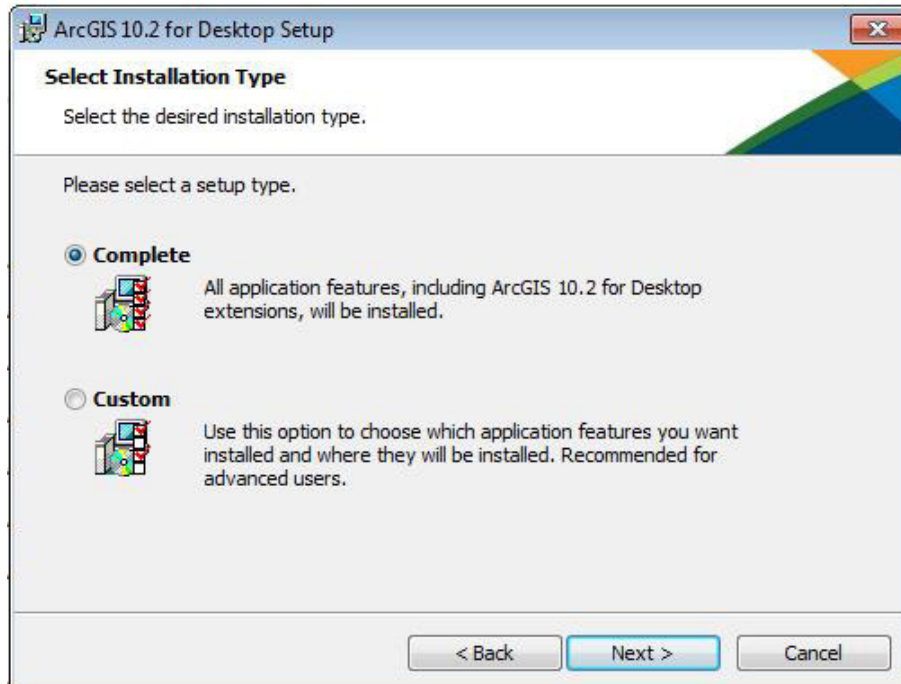


Click **Next**

4. Choose **Complete** (the default) if you want to install all the application features including the extensions. You may not have authorisation numbers for all of them just now but you can still install the capabilities so they are there if you want to authorise them later. This option is recommended for most users.

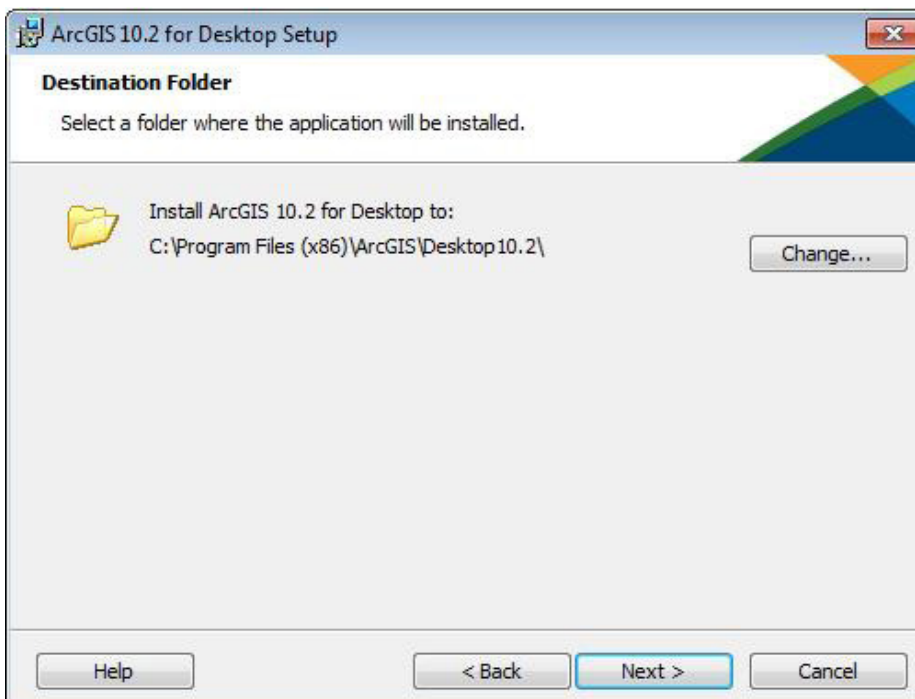
Choose **Custom** if you want to pick the various features you wish to install.

Here, a complete install will be performed.



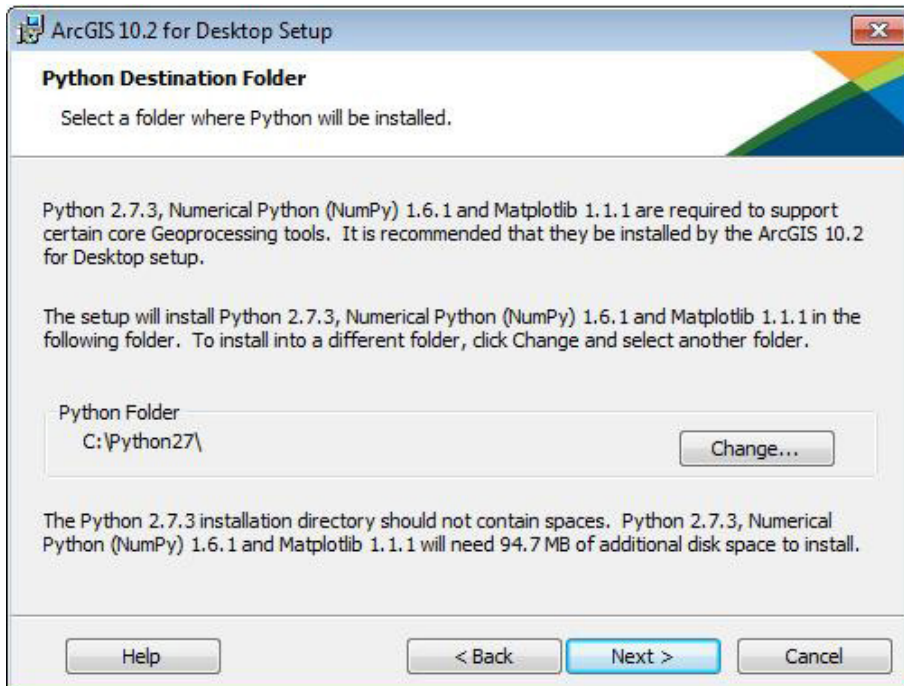
Click **Next**

5. Accept the default destination folder or choose your own.



Click **Next**

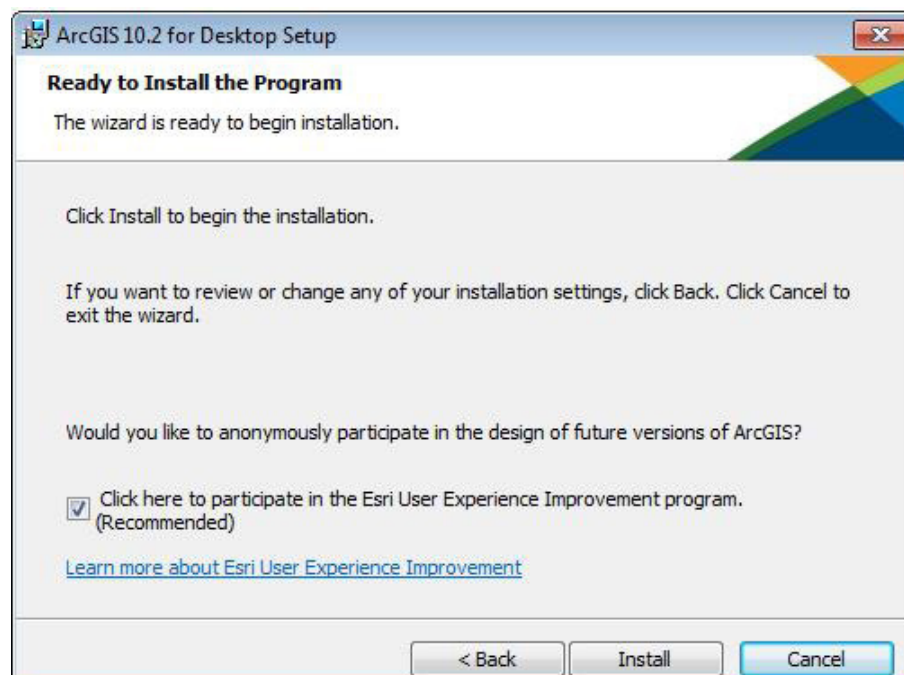
6. Choose the destination folder for Python. The default is C:\Python27\ but if you choose your own, make sure the folder name has no spaces.



Click **Next**

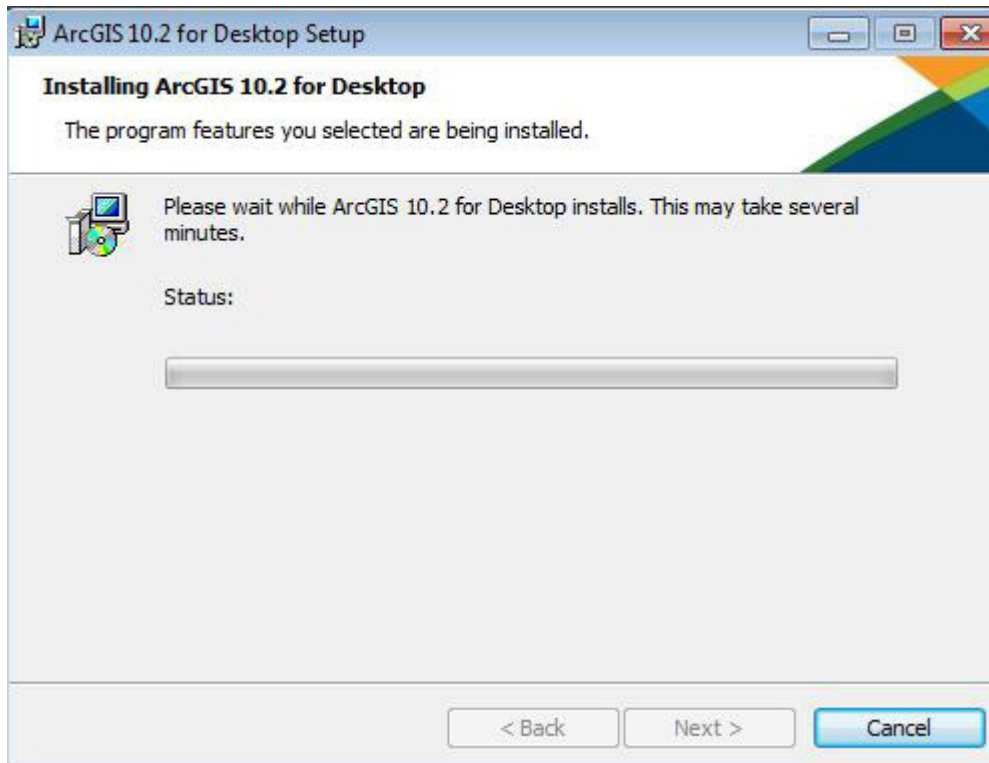
7. The next screen gives you the option to take part in the Esri User Experience Improvement programme. This gives you a chance to contribute to the design, development and improvement of ArcGIS by allowing the programme to collect information on how you are using ArcGIS and any problems you may encounter. More details can be read in this [Knowledge Base Technical Article](#).

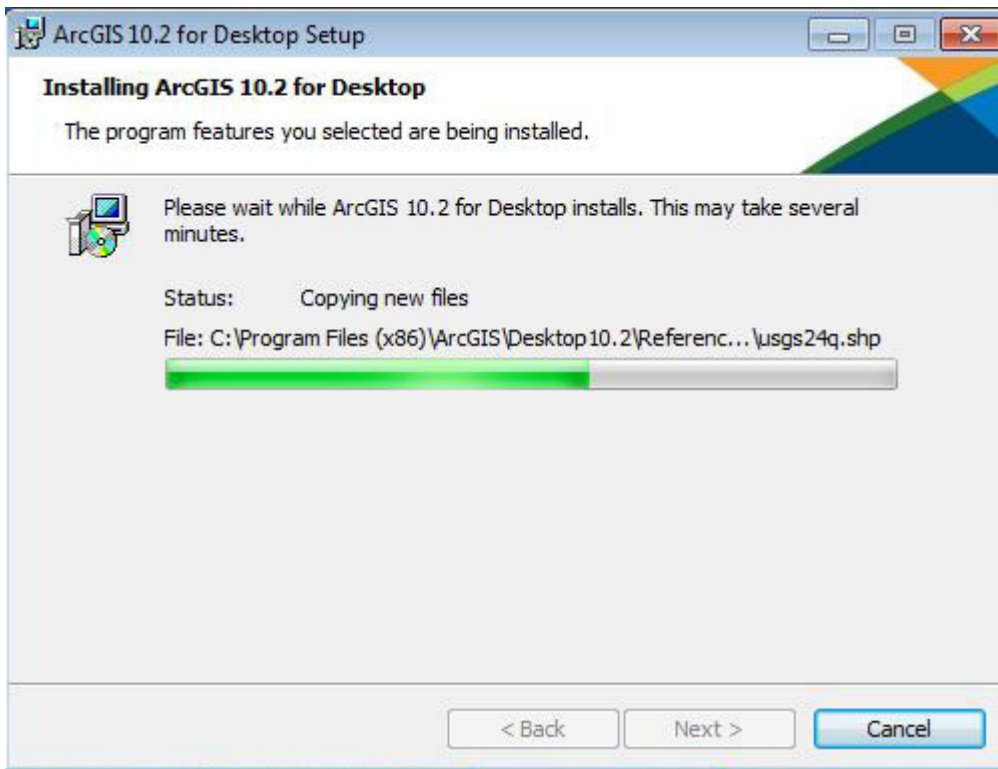
Tick the box if you would like to participate in this programme.



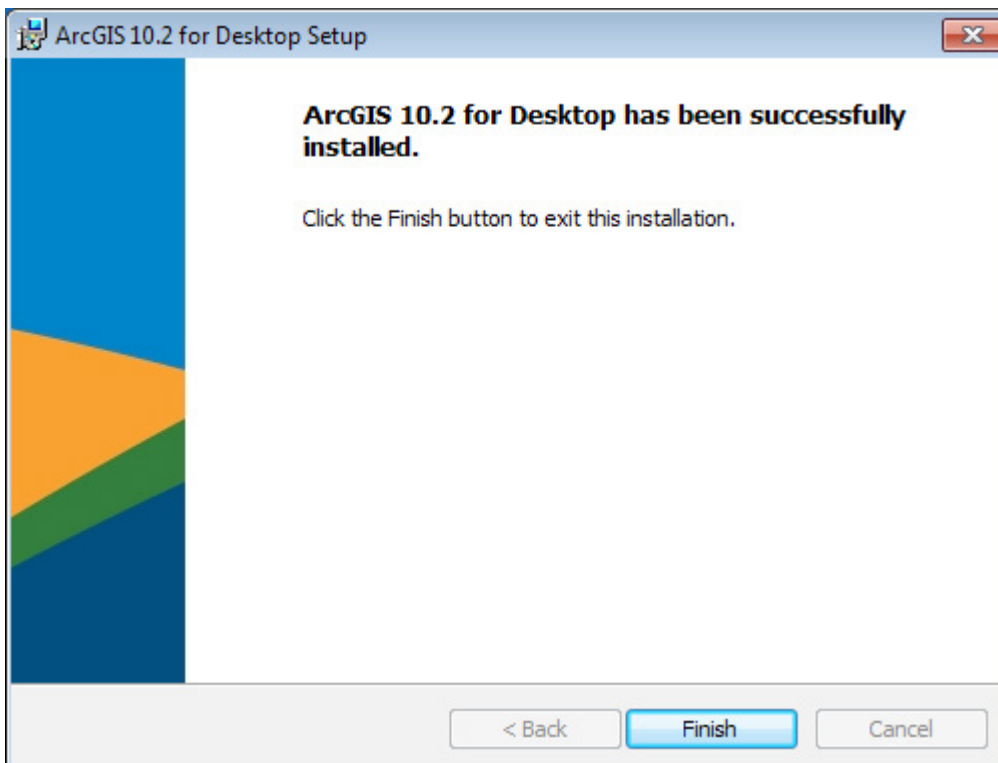
Click **Next**

8. Your system will be checked to make sure it meets the necessary requirements and that the .Net 3.5 framework is found. Then the features you have selected will be installed. This can take several minutes to complete. Maybe time for a cup of tea!



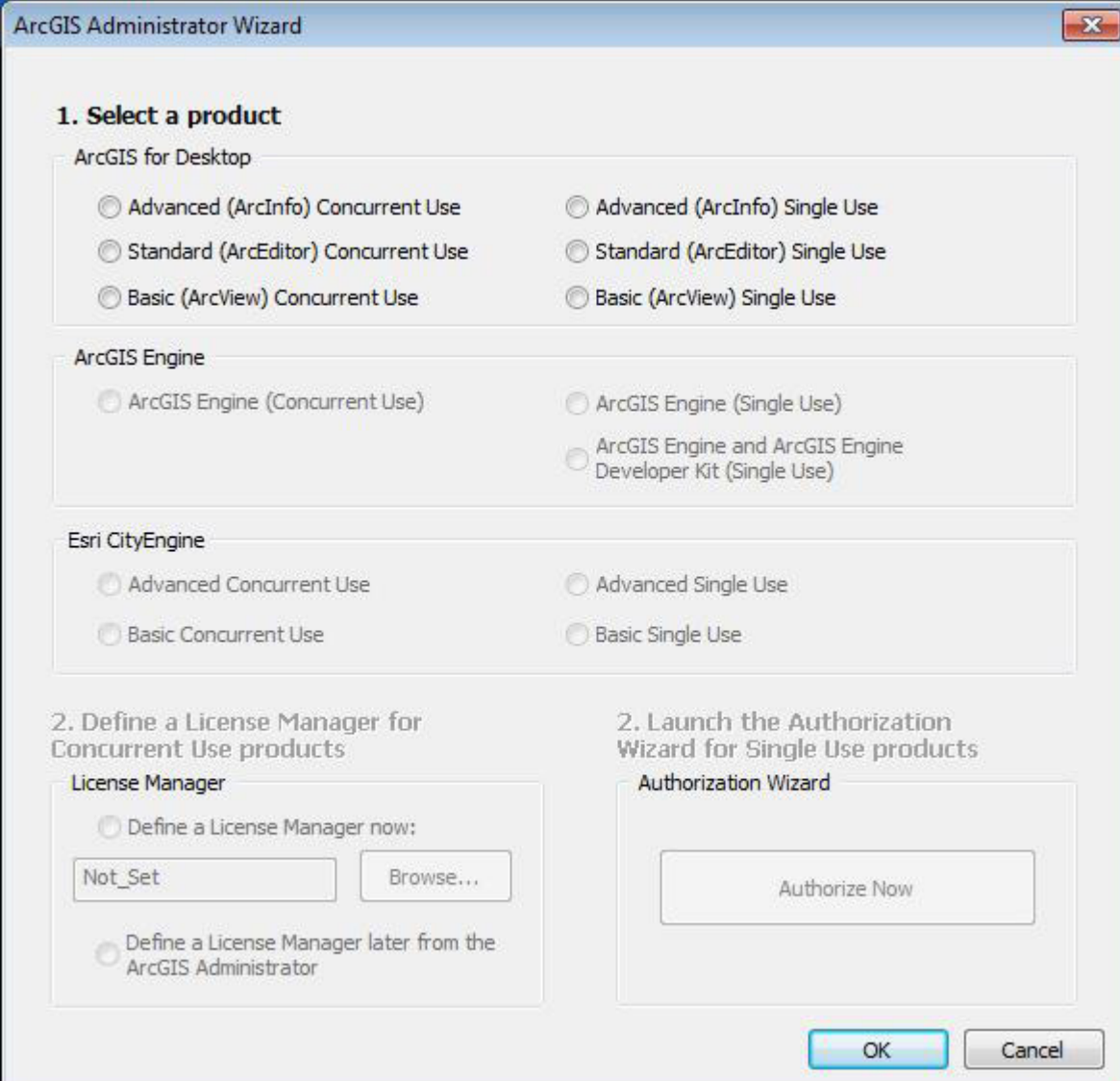


9. You will see this screen confirming that your software has been successfully installed



Click **Finish**

10. The ArcGIS Administrator Wizard will automatically popup.



In order to use concurrent licences with your newly installed Desktop software, a connection to a licence manager which has already been configured with your authorisation numbers is needed.

This is not set up yet, it is what you will do in the next two steps where you will install and authorise the licence manager. Therefore, please click **Cancel** to close the **ArcGIS Administrator Wizard** and continue to the Licence Manager install and authorisation steps.