



NX – Working Offline with Teamcenter

March 2020

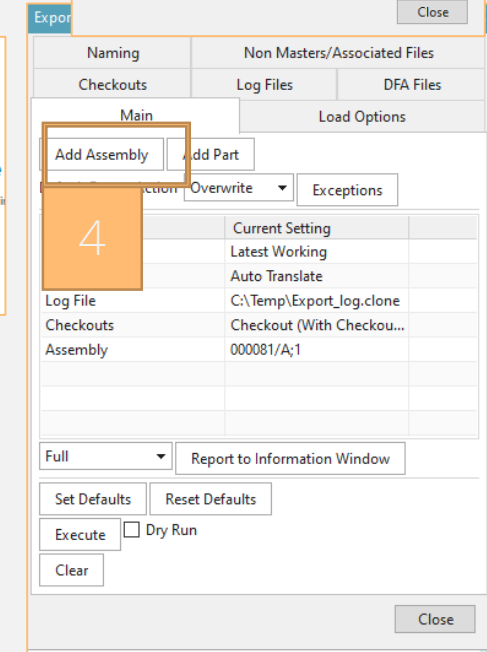
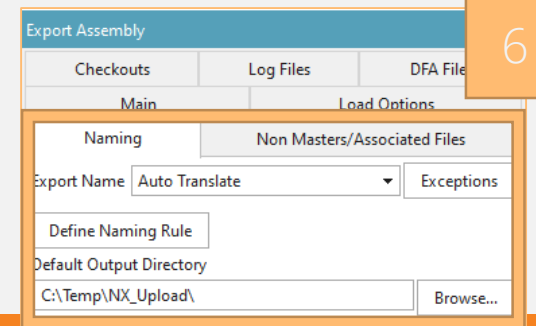
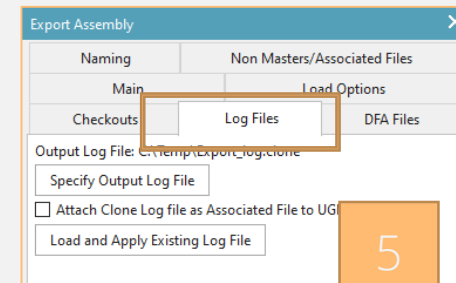
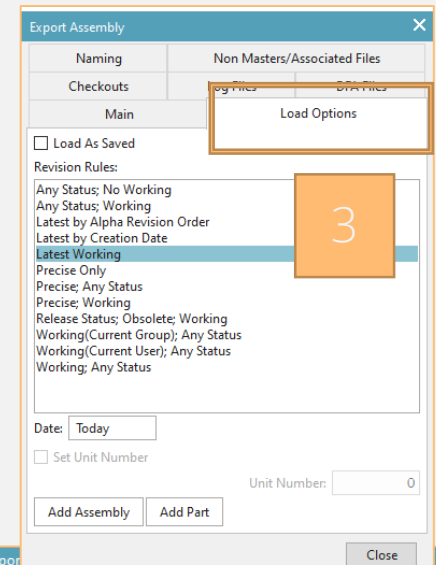
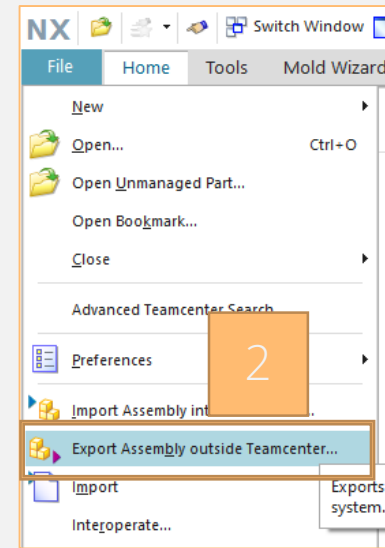
IDEAL GRP

Working Offline – Export data

Working Offline – Export data

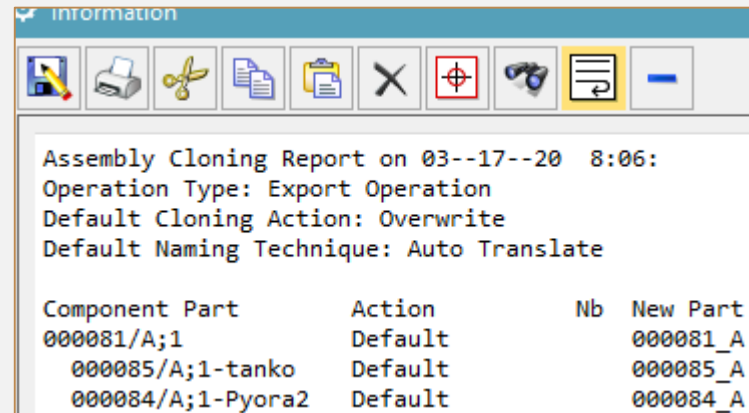
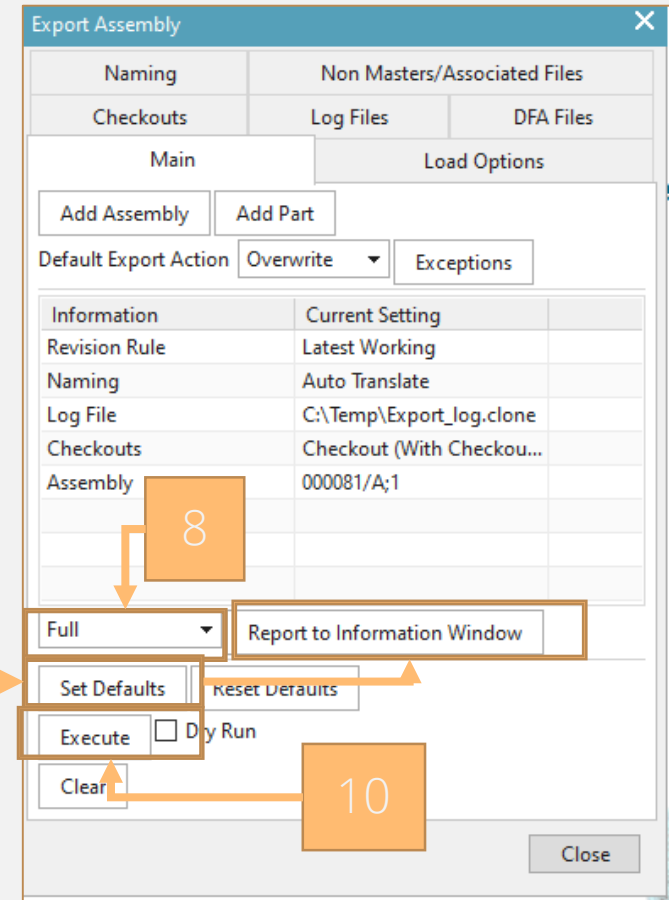
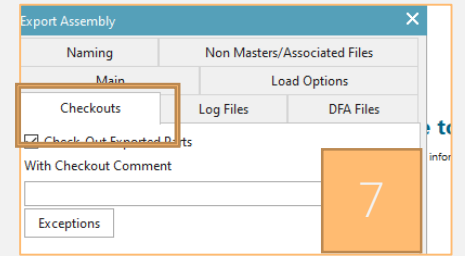
Before Working Offline, ensure from System Administrator that this is acceptable, and that you may reserve the items that you will use in Offline mode

1. Start NX from Teamcenter
2. Select Export Assembly Outside Teamcenter
3. From Load Options page, select appropriate Revision Rule
4. From Main tab, select Add Assembly and select assembly to be exported
5. Select Log Files tab and select Output Log File. Log file will be used while importing the items back to Teamcenter
6. Select Naming Tab and select Export Name → Auto Translate and Output directory



Working Offline

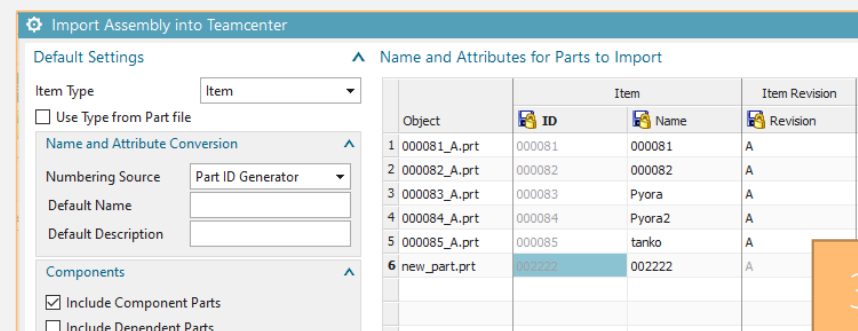
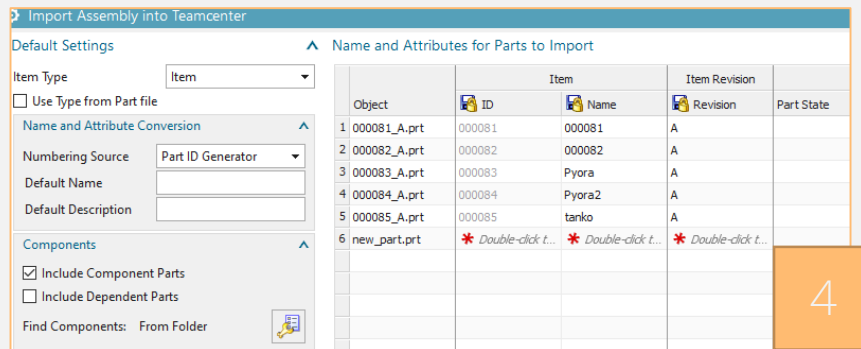
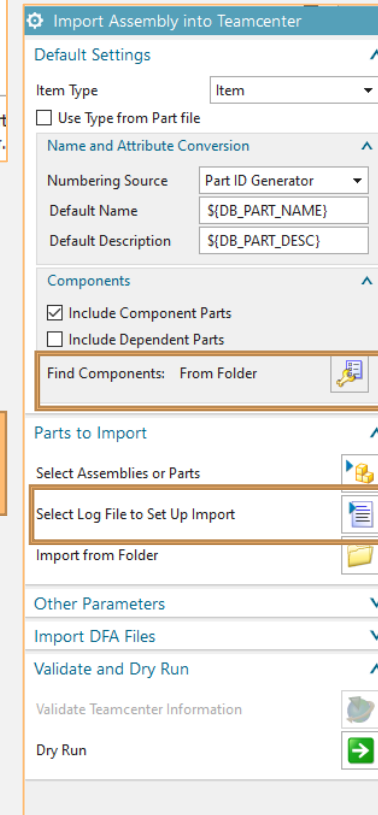
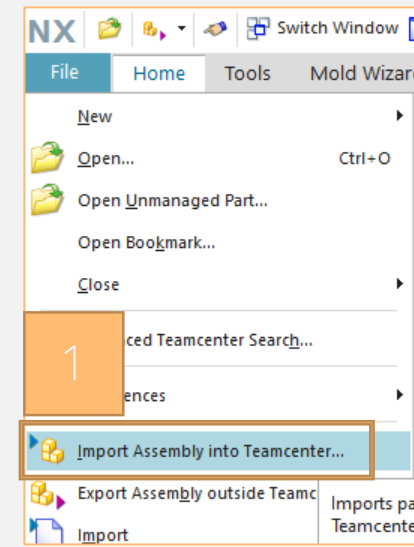
7. In the Checkouts tab, select "Check-Out Exported Parts"
8. From Main tab choose if only assembly will be exported (Root parts only) or components also (Full)
9. After this select "Set Defaults" and select "Report to Information Window"
10. If Information window displays correct information, select Execute to accept the export



Working Offline – Import data back

Working Offline – Import data back

1. Now NX can be connected to Teamcenter by selecting "Import Assembly into Teamcenter"
2. Select Log File to set up Import
3. Previously exported assembly will be collected to Import dialog, if new parts have been added, use suitable "Find Components" setting.
4. Select New parts and give them necessary Teamcenter information



Working Offline

5. After everything is set, select "Validate Teamcenter Information and Dry Run
6. Then Select Ok, if Dry run completes successfully
7. Check the data that it has been Checked In

