



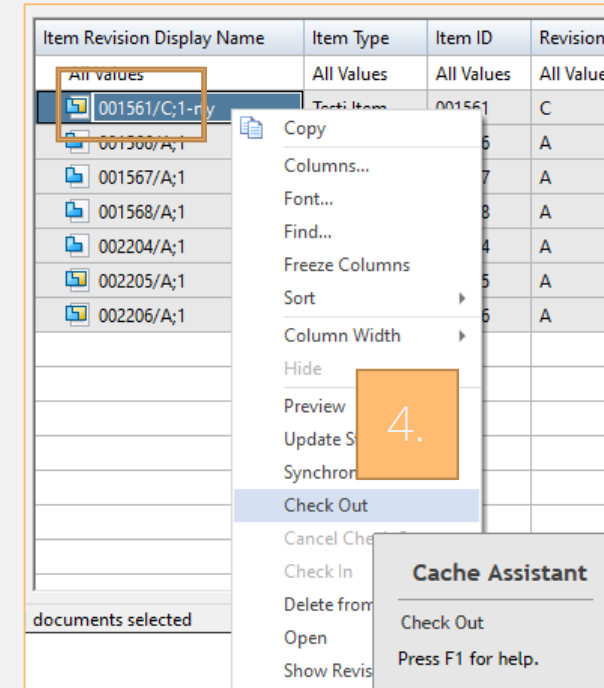
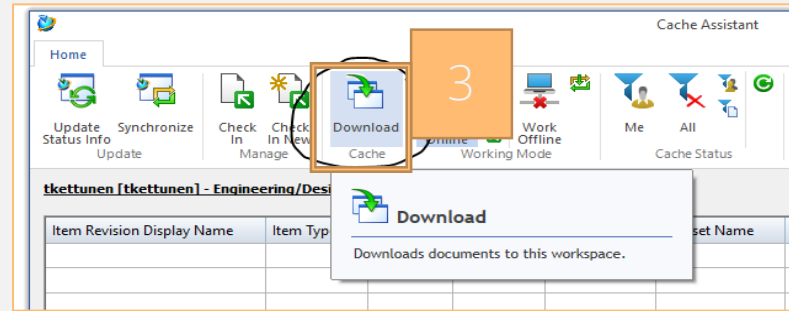
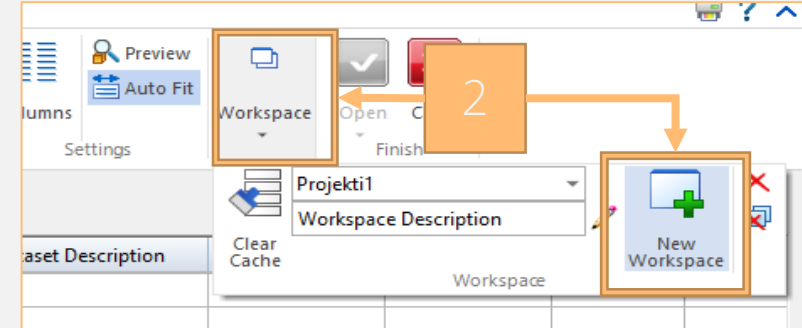
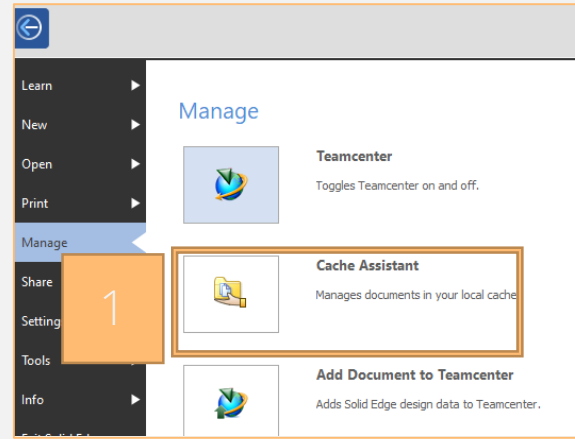
## Solid Edge SEEC – Working Offline

March 2020

**IDEAL** GRP

# Working Offline

- Offline mode can be set on from Solid Edge Cache Assistant
  - E.g. create different cache Workspaces for different projects
- Select Cache Assistant and if necessary select new Workspace
  - E.g. create different cache Workspaces for different projects
- Download files you want to work with in Offline mode
  - This can be done either by opening the model or assembly to Solid Edge or by selecting Download from Cache Assistant
- Check out the files you want to modify in Offline mode



# Working Offline

1. Select Synchronize from Cache Assistant and then Offline Mode
2. Cache Assistant can be then closed, Solid Edge Data is now ready to be used in Offline mode
3. Now Solid Edge can be connected to TC Database again, by selecting Working Online and Check In documents. If new items are added to assemblies while working offline, select Check in new and give mandatory Item information.

